

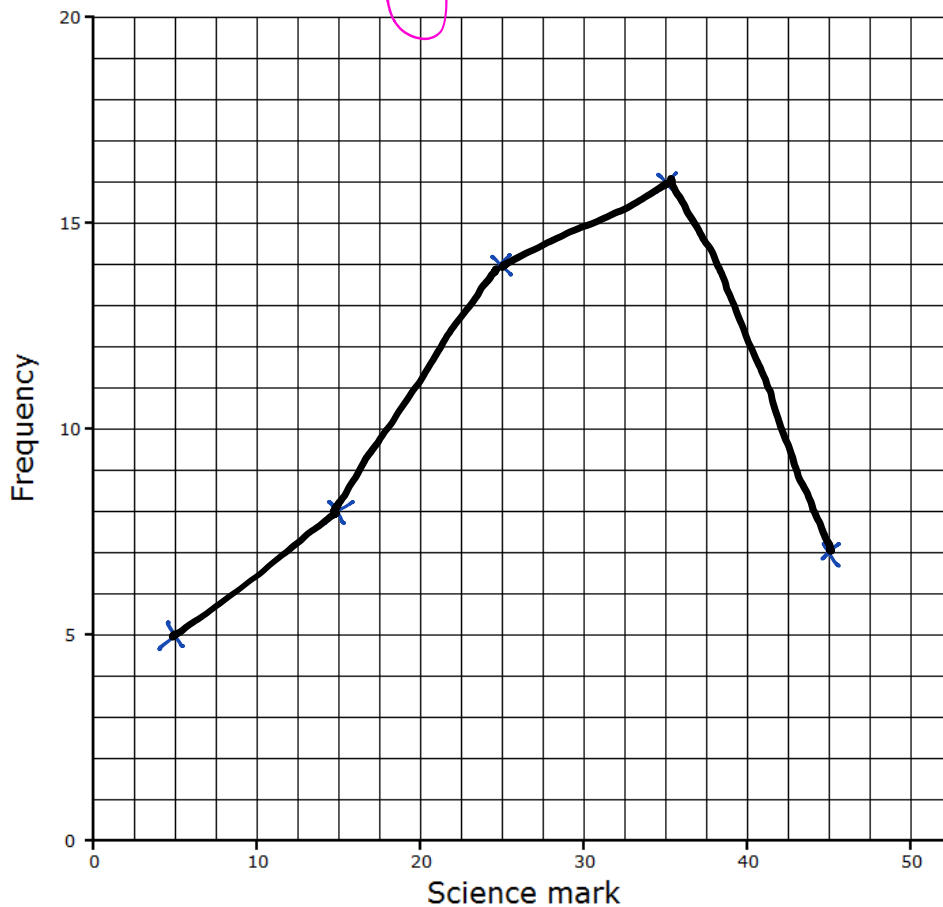
60 students take a science test. The test is marked out of 50.

This table shows information about the students' marks.

Science mark	0-10	11-20	21-30	31-40	41-50
Frequency	4	13	17	19	7

On the grid, draw a frequency polygon to show this information.

You will use a ruler won't you?



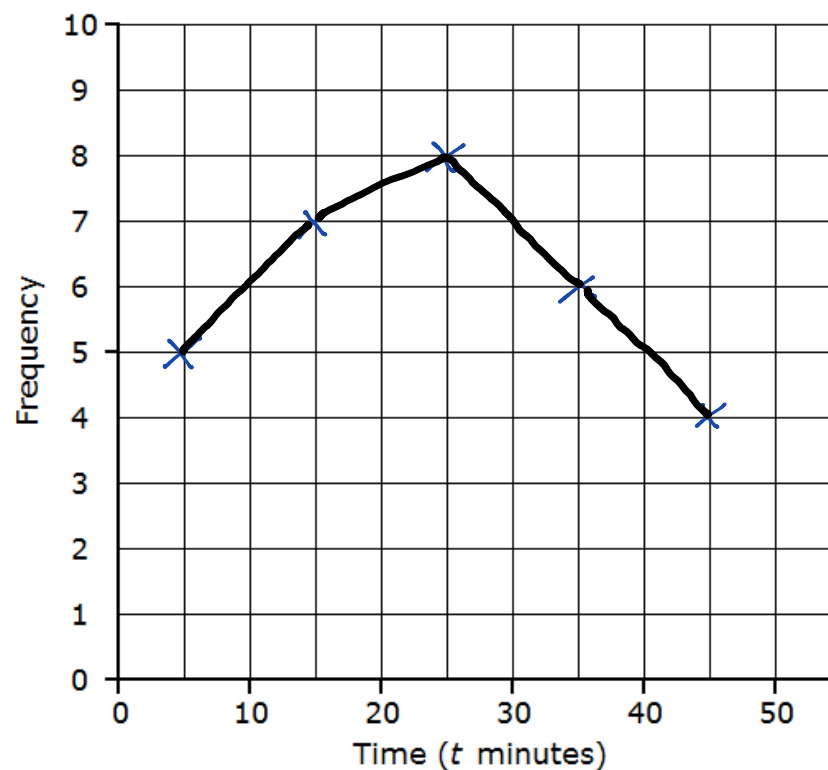
(2)

30 students took a test.

The table shows information about how long it took them to complete the test.

Time (t minutes)	Frequency
$0 < t \leq 10$ 5	5
$10 < t \leq 20$ 15	7
$20 < t \leq 30$ 25	8
$30 < t \leq 40$ 35	6
$40 < t \leq 50$ 45	4

(a) On the grid, draw a frequency polygon for this information.



(2)

(b) Write down the modal class interval

$20 < t \leq 30$

(1)

The table shows some information about the ages, in years, of 60 people.

Age (in years)	Frequency
0 to 9	6
10 to 19	13
20 to 29	12
30 to 39	9
40 to 49	7
50 to 59	3
60 to 69	10

(a) Write down the modal class.

10 to 19 (1)

Luke says "The median lies in the class 30 to 39"

Luke is wrong.

(b) Explain why.

its 20 to 29

(1)

(c) On the grid, draw a frequency polygon for the information in the table.

(2)

